

Azusa Land Reclamation



Azusa Land Reclamation is a regional facility that provides safe and convenient disposal services for communities, businesses and industries serving Los Angeles metro and Eastern Los Angeles County.

WM's approximately 300 disposal facilities employ the latest advances in landfill technology. This facility is engineered with environmental protection systems that meet or exceed rigorous government regulations and are subject to highly regulated monitoring and reporting requirements. Systems include engineered liners and covers, leachate collection and removal, and landfill gas collection and control.

Containment Design

Zone II at Azusa Land Reclamation has a 60-mil textured high-density polyethylene (HDPE) liner system to ensure that waste and wastewater (leachate) are contained and isolated from soil and groundwater.

Leachate Collection & Treatment

The collection and treatment system pumps leachate for discharge to the local Publicly Owned Treatment Works (POTW). Gases are separated from the leachate and sent to an onsite flare.

Groundwater Monitoring

Groundwater is monitored at seven wells, both upgradient and downgradient of the waste disposal footprint. The groundwater monitoring network is sampled and analyzed semi-annually in accordance with the procedures of the facility's groundwater sampling and analysis plan.

Landfill Gas Management

Azusa Land Reclamation collects and manages landfill gas through an enclosed flare system, which reduces emissions and prevents odor.

Security

Site security is ensured by controlled, limited access to the facility and perimeter fencing. During non-business hours the gate is locked and monitored by a security guard and electronic surveillance.

Acceptable Materials

- Asbestos — Friable/Non-Friable
- Clean Concrete & Asphalt
- Soils, Rock and Gravel
- Glass and Ceramics
- Inert Plastics
- Non-Hazardous Industrial & Special Waste
- Shredded/Altered Tires
- Whole Tires

Unacceptable Materials

- Appliances
- Electronic Waste
- Green Waste
- Hazardous Waste
- Liquids
- Metals
- Municipal Solid Waste (MSW)
- Plasterboard/Drywall
- Wood

Risk Mitigation

WM provides the highest level of services, backed with state-of-the-art site design and management systems, to minimize risks and reduce liabilities.

Community Partnerships and Involvement

Azusa Land Reclamation is proud to be an active supporter of community events and programs that make Los Angeles County a strong and healthy place to live, work and play.

Azusa Land Reclamation

1211 W. Gladstone St.
Azusa, CA 91702

(626) 334-0719

Hours of Operation

Monday - Friday 7:00am - 4:00pm
Saturday 7:00am - 12:00pm
Sunday - CLOSED

YEAR OPENED

1953

PROJECTED LIFE REMAINING

41 years

FACILITY ACREAGE

302 acres

PERMITTED FOOTPRINT

266 acres

REMAINING PERMITTED CAPACITY

40,655,081 cubic yards

OWNERSHIP

Azusa Land Reclamation, Inc.

PERMIT TYPE & PERMIT

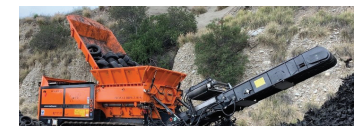
Solid Waste Facility Permit 19-AA-0013
Conditional Use C-151

REGULATORY AGENCIES

Cal Recycle, Department of Public Health,
Los Angeles Regional Water Quality
Control Board, SCAQMD

EMPLOYEES

18



CONTACT

Technical Support

TSC California
(800) 963-4776
TSCWestern@wm.com

COMMUNITY RELATIONS

Lily Quiroa

(951) 609-6341 or lquiroya@wm.com

COMMUNITIES SERVED

State of California

