



Painted Desert (Pen-Rob) Landfill

Painted Desert Landfill provides a safe and convenient disposal option for Northern Arizona communities, businesses, and industries. The facility is engineered with environmental protection systems that meet or exceed rigorous government regulations and are subject to highly regulated monitoring and reporting requirements.

Containment Design

Painted Desert Landfill (PDL) has an alternative liner system consisting of a low permeability in-situ clay liner without a leachate collection and recovery system. PDL also has the option to utilize a geosynthetic clay layer (GCL) liner when it is cost effective to create the necessary permeability requirements, as approved by Arizona Department of Environmental Quality in August 2000.

Groundwater Monitoring

Groundwater is monitored with multiple wells, which are upgradient and downgradient of the waste disposal footprint. The groundwater monitoring network is sampled and analyzed semi-annually in accordance with the 40CFR258.2.3 GW and ADEQ.

Landfill Gas Management

Painted Desert Landfill collects and manages landfill gas through a flare system to reduce emissions and prevent odor. The system collects landfill gas through 12 vertical wells and one horizontal pipe within the landfill.

Security

Site security is ensured by controlled, limited access to the facility through the gatehouse as well as perimeter fencing. During business hours, all traffic is directed to a gatehouse occupied by trained personnel. During non-business hours, the gate is locked and monitored by 24-hour electronic surveillance.

Approval Process

Waste Management has a defined waste screening protocol for each of its non-hazardous waste facilities, which protects employees and the environment. For industrial and special waste streams, the generator or agent must complete a waste profile for review by our technical staff. Waste profiles can be completed online at WMSolutions.com. Painted Desert Landfill requires a 24-hour prior approval for special waste loads. The cut-off time for disposal of asbestos and sludge is 2:00 pm.

PAINTED DESERT LANDFILL

9001 North Porter Avenue
Joseph City, AZ 86032
928 288 3605

HOURS OF OPERATION

Monday – Friday: 7:00am – 3:30pm
Closed Saturday and Sunday and
Major Holidays

YEAR OPENED

1986

PROJECTED LIFE REMAINING

150+ years

FACILITY ACREAGE

369 acres

PERMITTED FOOTPRINT

275 acres

REMAINING PERMITTED CAPACITY

23,984,587 cubic yards

TONS PROCESSED ANNUALLY

111,136 tons

OWNERSHIP

Waste Management of Arizona, Inc.

PERMIT TYPE & PERMIT

AZ Solid Waste Facility #09001900.15
AZ State Facility Waste ID #300033
Title V Air Quality Permit #54649
SPCC Self Certified
SWPPP Self Certified

REGULATORY AGENCIES

ADEQ
EPA

EMPLOYEES

8

Acceptable Material

Asbestos – Friable/Non-Friable	Municipal Solid Waste (MSW)
Ash	Off-spec Products
Auto Shredder Fluff	Paint Wastes
Construction & Demolition (C&D) Debris	Process Waste
Exempt Liquids for Solidification	Special Waste*
Exploration & Production (E&P) Wastes	Yard Waste
Industrial Waste	PCS

Painted Desert Landfill can accept 'exempt' liquids (aka non-industrial liquids) for solidification. Exempt liquids are defined as clean drilling muds, septic and sewage wastes, grease trap waste, water from concrete and rock saw cuttings, animal feed products, landscape or decorative pond and fountain cleanouts (such as water cleanouts from golf courses), and human consumables. Human consumables shall consist of off-specification ingestible products, related rinsate from product lines, skin application products such as sun tan lotions, skin lotions, shampoo, and other non-prescription FDA-regulated skin application products.

Cut-off time for asbestos and sludge is 2:00 p.m. This allows ample time and resources to adequately cover RACM prior to the end of the operating day.

*e.g. any discarded material that, due to its physical or chemical characteristics, requires more stringent handling, documentation or other management than normal Municipal Solid Waste (MSW).

Unacceptable Material

Automobile and Other Lead Acid Batteries	NORM/TeNORM with Radionuclides >5 pCi/g
Biohazardous Medical Waste	PCB Waste except as allowed under 40 CFR 761.61 (PCB Remediation Waste), 40 CFR 761.62 (PCB Bulk Product Waste) and 40 CFR 761.63 (PCB Household waste)
Bulk or Non-containerized Liquid Waste as defined in 40 CFR 258.28 (c)(1) including containers with more than 2% of the original liquid volume or free liquids as defined in EPA Method 9095 (paint filter test) except as authorized pursuant to MFLPA Section 3.3 (liquid solidification).	Waste Tires
CESQG (Hazardous) Wastes	Used Oil (as defined in 40 CFR 279)
Hazardous Waste	CERCLA Wastes
Incompatible Wastes (e.g. incompatible to be comingled with MSW)	Universal Waste
	Any other waste prohibited from disposal at any municipal solid waste landfill by federal, state, or local statute or regulation

Risk Mitigation

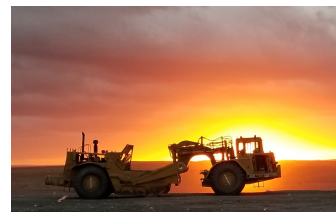
Waste Management provides the highest level of services, backed with state-of-the-art site design and management systems, to minimize potential risks and reduce liabilities.

Personal Protection Equipment Requirements

High visibility clothing will be worn when on site. Hardhat, safety glasses, steel toe protective boots, and reflective vest will be worn on the workface when outside of the vehicle.

Community Partnership and Involvement

Waste Management is proud to be an active supporter of community events and programs that Northern Arizona a strong and healthy place to live, work, and play.



CONTACT

Technical Support

TSC Phoenix
800 963 4776
TSCPhoenix@wm.com
TSC Denver
800 963 4776
TSCDenver@wm.com

COMMUNITY RELATIONS

Direct inquiries to
FourCornersCommunity@wm.com

COMMUNITIES SERVED

Northern Arizona and surrounding areas